

# LED DESIGNER WALL PACK



## FEATURES & BENEFITS

- Traditional wall pack appearance with advanced LED system.
- Corrosion resistant polyester powder painted 100µm thickness.
- Meets a 1000-hour salt spray certification per ASTM B117/ ISO 9227:2012.
- Over 20 optical lenses are available for virtually any application.
- High quality LEDs, driver and components, e.g. MOLEX, WAGO connectors.
- Multiple lighting control options are available, e.g. DALI, 1-10V.
- Emergency Power Supply (EPS) available.
- 5 years limited warranty.
- Nichia 3535 LED Chips / Philips Advance Xitanium LED Driver.

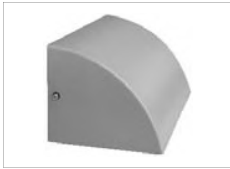
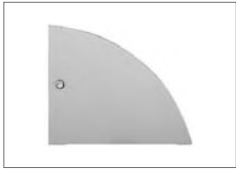
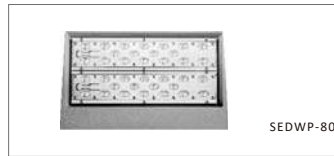
IDA Approved if color temperature is 3000K or less\*

## CERTIFICATIONS

UL/ CUL/ LM79/ CB/ CE/ RoHS/ IK08

## TECHNICAL PARAMETERS

<b>Power</b>	40-80W
<b>Input</b>	120-277VAC or 220-240VAC or 347-480VAC
<b>PF</b>	>0.95
<b>THD</b>	<20%
<b>L85</b>	>60,000H
<b>Operating Temperature</b>	-40°C ~ +50°C
<b>Efficacy</b>	110 - 120 lm/W
<b>ANSI CCT</b>	3000K/4000K/5000K/5700K
<b>Min CRI</b>	70 or 80 or 85
<b>IP Rating</b>	IP65
<b>SPD</b>	Optional
<b>DALI</b>	Optional
<b>1-10V</b>	Optional
<b>Photocell</b>	Optional
<b>Smart Control</b>	Optional
<b>Optic (IESNA)</b>	Type I, Type II, Type III, Type IV, Type V
<b>Color Options</b>	Black/Grey/Bronze/White



## ORDERING INFORMATION

Example : SEDWP-80-A1-50K-T4M-BK

Fixture	Power (40W/module)	Voltage	Color Temperature (CCT)	Light Distribution (Lens Type)	Fixture Color	Mounting Options (Brackets)	Lighting Controls	Accessory Info
SEDWP - Designer Wall Pack	30 - 30 Watt 40 - 40 Watt 60 - 60 Watt 80 - 80 Watt	A1: 120-277V AC  B4: 347-480V AC	30K - 3000K 40K - 4000K 50K - 5000K 57K - 5700K	T1M1 - Type I Medium T2M1 - Type II Medium T3M1 - Type III Medium T3L1 - Type III Long T4S1 - Type IV Short T4M1 - Type IV Medium T5U - 10° T5V - 25° T5W - 40° T5S - 60° T5M - 90° T5L - 120° TSX - 150° T5D - Type V Diffuser	GR - Grey BK - Black BZ - Bronze WH - White CU - Custom*	W - Wall Mount	00 Not required 01 Photocell 02 Motion Sensor 03 Photocell + Motion Sensor 04 DALI 05 1-10V dimming	BLS - Back Light Shield** RO - Rotated Optics** Bird Spike 10/20KA Surge-Protection Device Safety Cable Emergency Power-Supply

\*Extra cost for custom color

\*\*Note this after lens type.